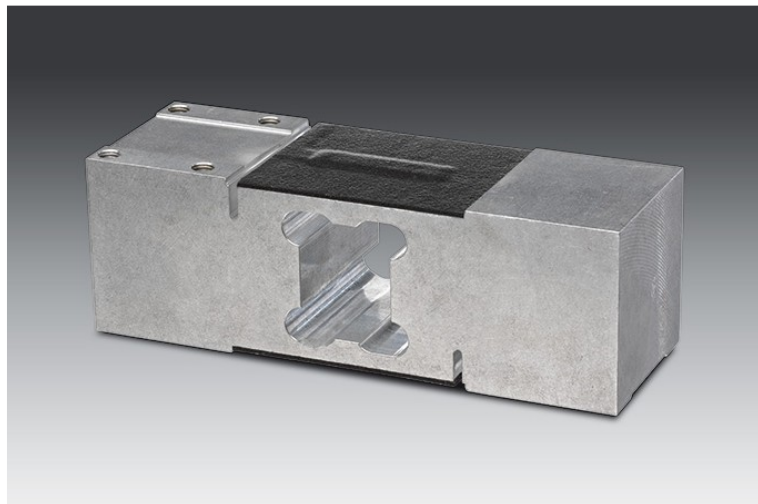




MP 72 High Capacity Single Point Load Cell



30kg ... 750kg

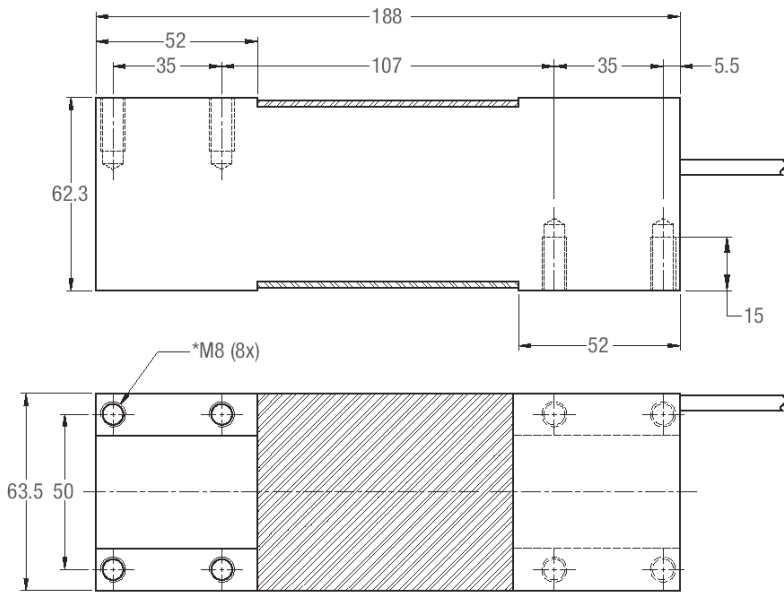
- Aluminium alloy construction
- Compatible with other sources
- Single point 600 x 600mm platform
- Approved according to OIML R60
- Ex version available

Applications

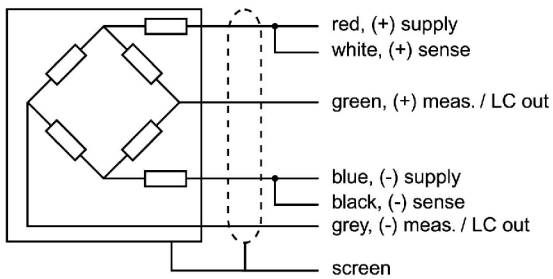
- Bench Scales
- Counting Scales
- Check Weighing Systems

Technical Data		C3MR	
Accuracy class (Combined error)		0.02	% C _n
Maximum capacity	E _{max}	30 / 50 / 100 / 200 / 300 / 500 / 750	kg
Maximum usable load	E _u	150	% E _{max}
Destructive load	E _d	≥ 300	% E _{max}
Safe side load	E _{lq}	100	% E _{max}
Maximum number of LC intervals	n _{LC}	3,000	
Minimum LC verification interval v _{min} = E _{max} /Y	Y	15,000	
Rated output	C _n	2.0	mV/V
Tolerance on rated output	D _c	≤ ± 10	% C _n
Zero output signal	S _{min}	≤ ± 5	% C _n
Creep, during 30 min.	d _{cr}	≤ ± 0.016	% C _n
Temperature effect on S _{min}	TK _{Smin}	≤ ± 0.009	% C _n / 10K
Temperature effect on C	TK _C	≤ ± 0.01	% C _n / 10K
Input impedance	R _{LC}	413 ± 20	Ω
Output impedance	R ₀	350 ± 25	Ω
Insulation impedance (100V DC)	R _{IS}	≥ 5	GΩ
Recommended supply voltage	B _u	5 ... 15	V
Nominal ambient temperature range	B _T	- 10 ... + 40	°C
Usable ambient temperature range	B _{Tu}	- 20 ... + 65	°C
Nominal deflection	S _{nom}	0.46 (E _{max} =30kg); 0.49 (E _{max} =50kg); 0.45 (E _{max} =100kg); 0.38 (E _{max} =200kg); 0.39 (E _{max} =300kg); 0.44 (E _{max} =500kg); 0.50 (E _{max} =750kg)	mm
Cable length		3.0 (other lengths optional)	m
Cable type		6 conductor TPE cable (AWG 26), shield grounded (optional: shield floating)	
Sensor material		Aluminium	
Protection class (acc. to IEC 529)		IP67	

The technical data given here serve only as a product description and must not be interpreted as guaranteed characteristics in legal sense.



Dimensions in mm



Wiring diagram

Type	Order Number	Type	Order Number
MP 72/ 30 kg C3MR	9408 272 07030	MP 72/ 30 kg C3MR E	9408 672 07030
MP 72/ 50 kg C3MR	9408 272 07050	MP 72/ 50 kg C3MR E	9408 672 07050
MP 72/ 100 kg C3MR	9408 272 07110	MP 72/ 100 kg C3MR E	9408 672 07110
MP 72/ 200 kg C3MR	9408 272 07120	MP 72/ 200 kg C3MR E	9408 672 07120
MP 72/ 300kg C3MR	9408 272 07130	MP 72/ 300kg C3MR E	9408 672 07130
MP 72/ 500kg C3MR	9408 272 07150	MP 72/ 500kg C3MR E	9408 672 07150
MP 72/ 750kg C3MR	9408 272 07175	MP 72/ 750kg C3MR E	9408 672 07175

Sartorius Mechatronics T&H GmbH
 Meiendorfer Straße 205
 22145 Hamburg, Germany
 Tel. +49.40.67960.303
 Fax +49.40.67960.383
 www.sartorius-mechatronics.com